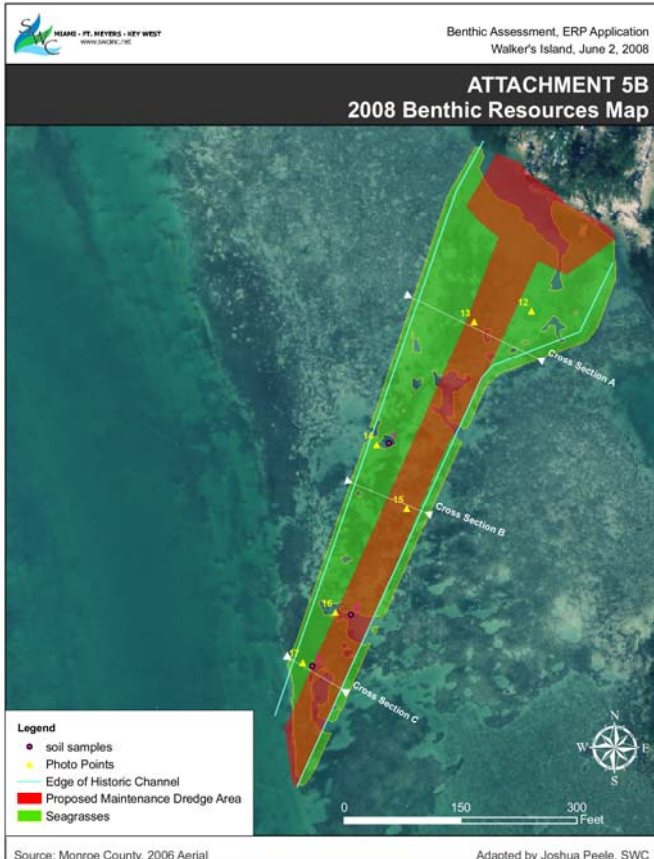


WALKER'S ISLAND MAINTENANCE DREDGING, Monroe County

SWC (Sandra Walters Consultants, Inc.) is in charge of acquiring all environmental resource permits for maintenance dredging of a boat basin and associated entrance channel located at Walker's Island, also known as Little Conch Key, in the Florida Keys. This property is the historic site where the 1960s "Flipper" television series was filmed. Outstanding tasks include conducting all benthic resource mapping and prepared a detailed impact assessment and mitigation plan that includes a long-term maintenance plan for the project and surrounding submerged lands.

Specific components of the mitigation plan include avoidance and minimization of impacts to benthic resources, filling and restoring of a relict dredged basin to ambient grade to promote re-colonization of seagrass, restoration of orphan seagrass propeller scars within the surrounding areas, hydrologic-flow improvements, and signage to prevent boat-caused damage to benthic resources.



SWC responsibilities have included:

- ❖ extensive research regarding dredging history of entrance channel and boat basin,
- ❖ mapping of benthic resources subject to unavoidable impacts using sub-meter-accuracy GPS,
- ❖ collecting sediment samples and testing for heavy metals and grain size profiles,
- ❖ mapping additional benthic resources and recording water depth measurements within relict dolphin basin area,
- ❖ collecting data required for design of hydrologic improvements to project area,
- ❖ measuring and characterizing offsite orphan prop scars for restoration,
- ❖ preparing impact assessment and mitigation plan, including management of surrounding shallow flats to protect from future damage,
- ❖ coordinating with Florida Keys National Marine Sanctuary, Fish & Wildlife Conservation Commission, and U.S. Coast Guard regarding signage associated with management plan,
- ❖ preparation of all Uniform Mitigation Assessment Method (UMAM) evaluations,
- ❖ supervising engineer who prepared maintenance dredge and spoil disposal plan along with mooring facility redesign drawings,
- ❖ preparing all documents for ERP application and processing submittal with U.S. Army Corps of Engineers and South Florida Water Management District, and
- ❖ coordinating with all ERP commenting agencies to fully address issues and concerns.

